



# GS1 Healthcare Japan

For the further  
involvement of  
Japanese HC Industry





# GS1 Healthcare Japan launched

- The first general assembly of the GS1 Healthcare Japan took place on May 28, 2009.
- Around 100 attendees from MoH, METI, healthcare companies, hospitals, associations and solution providers.
- Membership; as of Mar. 1, 2010
  - Regular Member (Healthcare Companies) – 45
  - Individual Member (Doctors, Professors, etc.) – 15
  - Association Member (Industry Associations) – 13
  - Supporting Member (Solution Providers) – 23



**Professor Sigekoto Kaihara**  
Chairperson of GS1 Healthcare Japan





# Chairperson & Executive Council Members

## Chairperson & Vice-Chairperson

Chairperson: Professor Sigekoto Kaihara

(Dean of International University of Health and Welfare Graduate School)

Vice-Chairperson: Dr. Chikayuki Ochiai

(Chief Executive of Kanto Medical Center NTT EC)

Vice-Chairperson: Mr. Takaaki Matsutani

(Vice-Chairperson of The Federation of Japan Pharmaceutical Wholesalers Association)

Vice-Chairperson: Mr. Kenichi Matsumoto

(Chief Executive of Sakura Global Holding Co., Ltd.)

## Executive Council Members

Kanto Medical Center NTT EC

Eisai Distribution Co., Ltd.

Edwards Life Sciences LLC.

Olympus Medical Systems Corp.

Sakura Seiki Co., Ltd.

Johnson & Johnson K.K.

Tyco Healthcare Japan

Terumo Corporation

Nippon Becton Dickinson and Company Ltd

Banyu Pharmaceutical Co Ltd

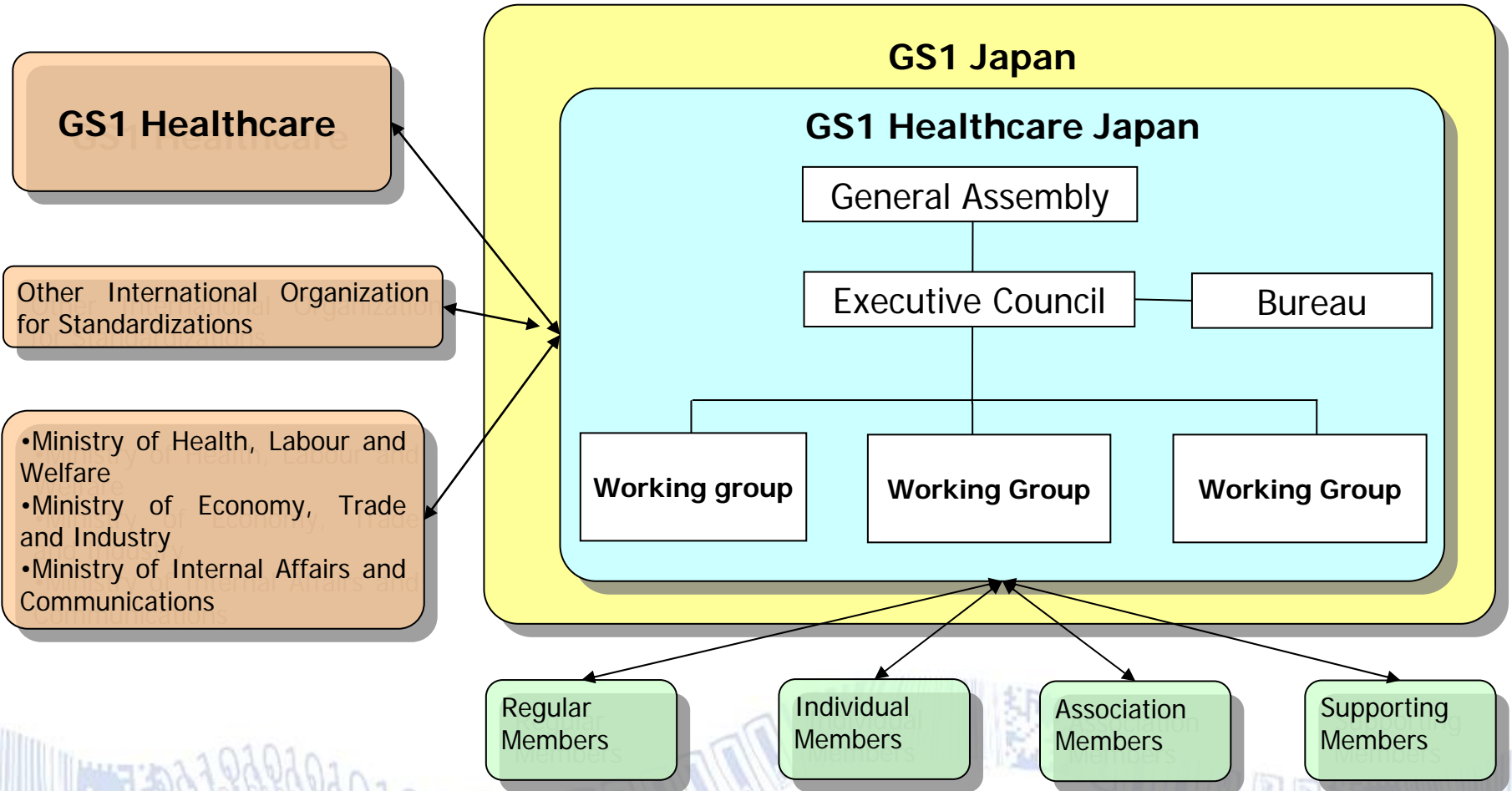
Mediceo Paltac Holdings Co., Ltd.





# Organizational Chart of GS1 Healthcare Japan

## Governing Structure





## Regular Members of GS1 Healthcare Japan

ABBOTT JAPAN Co., LTD  
B.Braun Aesculap Japan Co Ltd  
Banyu Pharmaceutical Co Ltd  
Boston Scientific Japan K.K.  
Care Fusion Japan 228 K.K.  
Celgene K.K.  
Central Uni Co., Ltd.  
CHAIN MANAGEMENT CO., LTD.  
DVx Inc  
Edwards Lifesciences Ltd  
Eisai Distribution Co.,Ltd.  
F&S UNI Management  
Fukuda Denshi Co., Ltd.  
IWABUCHI YAKUHIN Inc.  
Johnson & Johnson K.K.  
Masimo Japan Corporation  
Mediceo Paltac Holdings Co., Ltd  
Medtronic, Japan Co., Ltd.  
Mizuho Ikakogyo Co., Ltd.  
MNEXT Co., Ltd.  
Muranaka Medical Instruments Co., Ltd.,

NIHON KOHDEN CORPORATION.  
Nippon Becton, Dickinson and Company Ltd  
Olympus Medical Systems Corp.  
Ortho-Clinical Diagnostics K. K.  
Sakura Finetek Japan Co., Ltd.  
Sakura Healthcare Support Co., Ltd.  
Sakura International Co., Ltd.  
Sakura Seiki Co., Ltd.  
Sakura SI Co., Ltd.  
Sakura System Planning Co., Ltd.  
Sentient Health Japan K.K.  
Smiths Medical Japan Ltd.  
St. Jude Medical Japan Co., Ltd.  
Sun Medical Technology Research Corp.  
Terumo Corporation  
Toho Pharmaceutical Co., Ltd.  
TOYO Medic  
Tyco Healthcare Japan  
YAGAMI Co., Ltd.  
YAKULT HONSHA CO., Ltd.



## WGs of GS1 Healthcare Japan

★ Kick Off Meetings of 3 WGs were held on Nov. 24, 2009

AIDC WG

(39 members)

To investigate standardized barcode solutions for drugs & medical devices supply chain from manufacturers, wholesalers to hospitals.

RFID WG

(30 members)

To explore a model of RFID applications for healthcare logistics and hospital management

International WG

(26 members)

To collect and share the information concerning international standardization activities in the healthcare sector



## Recent activities of GS1 Healthcare Japan

- **Healthcare Survey Mission to Europe and United States**  
Aug. 26 ~ Sep. 6, 2009  
Visiting NHS, FDA, 5 hospitals, 1 GPO and GS1US  
15 participants
- **Participation in GS1 Healthcare Hong Kong Conference**  
Oct. 5 ~ 9, 2009  
6 participants
- **Briefing Session on Healthcare Survey Mission & GS1 Healthcare Hong Kong Conference**  
Dec. 1, 2009  
90 participants
- **Hospital Visit (Kanto Medical Center NTT EC)**  
Dec. 4, 2009  
63 participants
- **DC Visit (Eizai Pharmaceuticals Logistics Co.)**  
Jan. 26, 2010  
40 participants



# Activities of GS1 Healthcare Japan

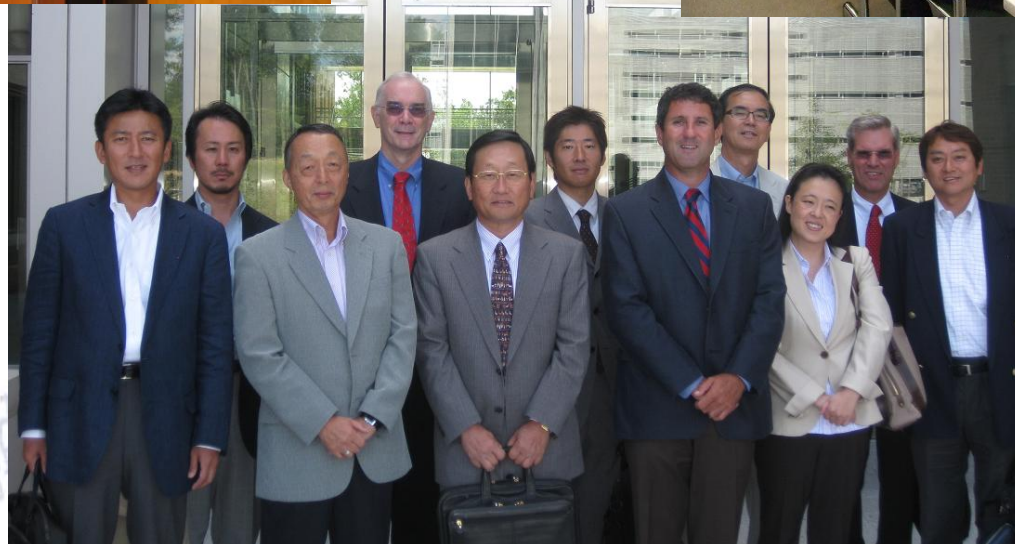
<http://www.dsri.jp/gshealth/>



**GS1Healthcare  
Hong Kong  
Conference  
(Oct. 7, 2009)**



**Briefing Session  
(Dec. 1, 2009)**



**Survey Mission  
visiting FDA  
(Sep. 2, 2009)**



# Contact Details

GS1 Japan

*3<sup>rd</sup> Fl. Place Canada*

*7-3-37, Akasaka, Minato-ku Tokyo*

*T:81-3-5414-8500*

*[www.gs1jp.org](http://www.gs1jp.org)*

